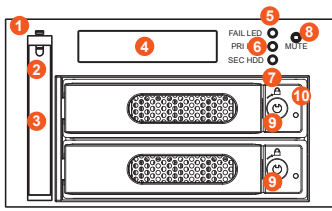


RAIDON

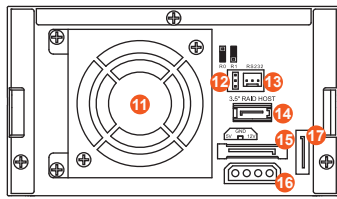
iR2623-S3 快速安裝導引

產品示意圖與配件表

前視圖



背視圖



- | | |
|----------------|---------------------|
| 1. 2.5吋硬碟狀態指示燈 | 11. 散熱風扇 |
| 2. 2.5吋硬碟鑰匙孔 | 12. RAID模式設定 |
| 3. 2.5吋硬碟抽取盒 | 13. RS232埠 |
| 4. LCD顯示幕 | 14. 3.5" 硬碟SATA連接埠 |
| 5. 故障顯示燈 | 15. SATA 15Pin電源輸入埠 |
| 6. 主硬碟狀態燈號 | 16. 4Pin電源輸入埠 |
| 7. 次硬碟狀態燈號 | 17. 2.5" 硬碟SATA連接埠 |
| 8. 靜音按鍵 | |
| 9. 硬碟抽取盒 | |
| 10. 硬碟抽取盒鑰匙孔 | |

打開包裝外盒後，包裝內容應包含下列組件：

iR2623-S3 配件內容	
iR2623-S3 產品本體x1(內含抽取盒x3)	
內接RS232線 x1	
外接RS232線 x1	
SATA線 x1	
光碟 x 1	
零件包 x 1	
快速安裝導引 x 1	

請先確認相關配件與產品本身是否有受損或是缺少配件，若有任何疑問，請與您的經銷商或業務人員聯絡。

V1.0 (Apr. 2017)

1

產品使用注意事項

1. 電腦或伺服器具備SATA I、SATA II或SATA III介面。
2. 具備SATA I、SATA II或SATA III介面的硬碟。
3. 強烈建議使用iR2623-S3前設定好RAID模式(預設值是RAID 1)。
4. 本系統允許使用不同廠牌的硬碟。但如果要獲得更好的效能，我們強烈建議使用相同廠牌型號的硬碟。
5. 安裝硬碟前請先確認所使用的硬碟並無壞軌或是其他問題，以免導致系統損毀或資料遺失。
6. 硬碟格式化後，iR2623-S3的總使用儲存容量或許會與硬碟容量加總後的有所不同。
7. 強烈建議除了使用iR2623-S3的資料儲存功能外，請針對重要資料備份到另一個儲存裝置上或遠端備份，雙重備份您重要的資料。若您儲存在iR2623-S3的資料損毀或遺失，RAIDON將不負任何的責任。

硬碟安裝

請參照以下步驟完成硬體安裝

步驟1 拆開外包裝並取出產品本體。

步驟2 將系統擺放於穩固平台，並確認散熱風扇風扇口沒有被其他物體擋住，系統四周有適當的散熱空間。

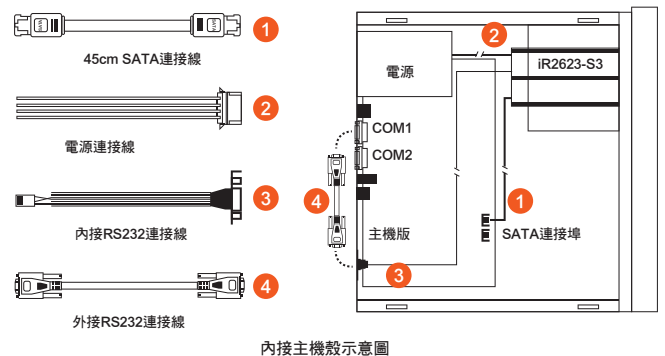
(擺放環境請避免接近潮濕或其他易對產品造成損壞的環境。)

步驟3 請使用零件包內附的頂針插入鑰匙孔後，抽取盒門門將會彈開，即可將硬碟抽取盒取出。

步驟4 將硬碟安裝到抽取盒上，並以零件包內附的螺絲加以固定，以避免不必要的移動對硬碟造成傷害。

步驟5 硬碟安裝完成後請將抽取盒平移放入主機內並關上把手。

步驟6 將附件中的連接線分別接到電腦與iR2623-S3的相關連接埠。(參照以下圖)



內接主機殼示意圖

2

設定RAID 層級

請透過機器後面的jumper來設定RAID層級。出廠預設值是RAID 1。機器背面有三根pin腳用來設定RAID層級，若要設定RAID 0模式，請選用下面兩根；若要設定RAID 1模式，請選用上兩根。

1. RAID 1 模式

- 1). 將新的硬碟放入iR2623-S3中。強烈建議您使用兩顆相同的硬碟，以便取得對等的容量。如果兩顆硬碟的容量不同，iR2623-S3將會以小容量的硬碟為依據。
- 2). RAID 1模式下，兩顆硬碟是鏡射關係因此擁有相同的資料，因此有一顆硬碟損毀仍然可以正常運作。當放入新硬碟取代損毀硬碟後，系統會自動將資料重建到新的硬碟。

2. RAID 0 模式

- 1). 將新的硬碟放入iR2623-S3中。強烈建議您使用兩顆相同的硬碟，以便取得對等的容量。如果兩顆硬碟的容量不同，iR2623-S3將會以小容量的硬碟為依據。
- 2). RAID 0模式下，兩顆硬碟的容量會被加總成一個大儲存容量，並且提供更佳的存取效能。

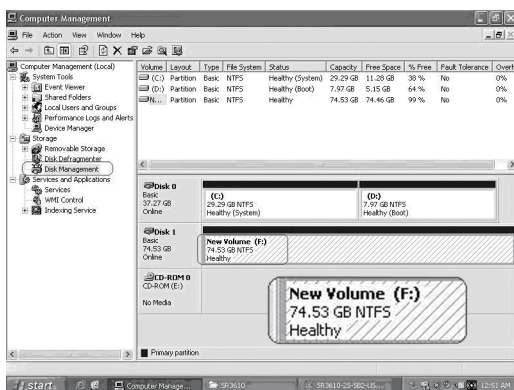
硬碟格式化及磁碟機建立

當iR2623的硬體安裝完成，即可準備進行開機動作。

硬體安裝完成後，將BIOS的硬碟偵測設定為自動，iR2623-S3將會被視為如同一顆硬碟一般。

當電腦開機後，系統會顯示下列偵測訊息：

1. 安裝在iR2623-S3中的硬碟能夠被Windows的裝置管理員偵測到。
2. 使用iR2623-S3前，使用者可以透過磁碟管理選擇硬碟的格式。



到此完成整個安裝程序。使用者可以如同存取一般硬碟般的使用iR2623-S3。

3

LCD螢幕顯示與LED燈號說明

1. 開機與正常待機狀態。

iR2623 RAID-1 vxxxxx.x	Pri HDD : OK Sec HDD : OK
---------------------------	------------------------------

狀態	警示燈	主硬碟燈號		次硬碟燈號		蜂鳴器
		HDD1	HDD2	HDD1	HDD2	
開機	---	橘燈恆亮	---	藍紫燈閃爍	---	---
待機	---	橘燈恆亮	---	藍燈恆亮	---	---
硬碟故障	紅燈恆亮	---	---	紅燈恆亮	---	鳴叫
資料存取	---	橘燈恆亮	---	藍紫燈閃爍	---	---
資料重建(Source)	---	橘燈恆亮	---	藍燈恆亮	---	---
資料重建(Target)	---	---	---	紅燈閃爍	---	---
風扇故障	紅燈恆亮	橘燈恆亮	---	藍燈恆亮	---	鳴叫
溫度過高	紅燈恆亮	橘燈恆亮	---	藍燈恆亮	---	鳴叫

感謝您使用 銳銳科技股份有限公司 的產品。

本手冊裡的資訊在出版前雖然已經被詳細確認，但實際產品規格將以出貨時為準；任何的產品規格或相關資訊更新，請您直接上www.RAIDON.com.tw網站查詢，或是直接與您的業務聯絡窗口聯繫，本公司將不另行通知。

如果您對銳銳科技的產品有任何疑問，或是想獲得最新產品訊息、使用手冊或韌體，請您聯絡 supporting@raidon.com.tw，我們將儘速回覆您。

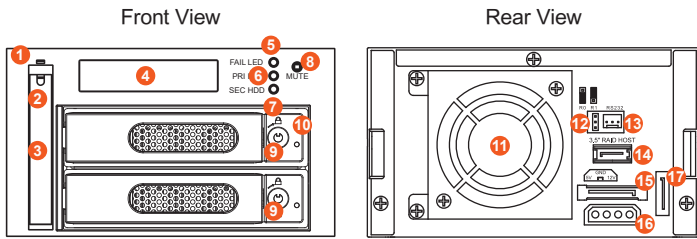
本說明相關產品內容歸 銳銳科技股份有限公司 版權所有

4

RAIDON

iR2623-S3 Quick Installation Guide

Package Contents and Product Views



- | | |
|----------------------------------|-----------------------|
| 1. 2.5" HDD status indicator LED | 11. Cooling fan |
| 2. 2.5" HDD tray ejector opening | 12. RAID mode switch |
| 3. 2.5" HDD removable tray | 13. RS232 Port |
| 4. LCD Display | 14. 3.5" SATA Port |
| 5. LED of failure Alarm | 15. 15 PIN SATA Port |
| 6. Pri. HDD status indicator | 16. 4Pin Power socket |
| 7. Sec. HDD status indicator | 17. 2.5" SATA Port |
| 8. Mute Button | |
| 9. Removable drive tray | |
| 10. HDD tray key lock | |

Open the package and you should find the following:

iR2623-S3
iR2623-S3 X1 (with removable drive tray enclosed x 3)
Internal RS232 Cable x 1
External RS232 Cable x 1
SATA Cable x 1
CD x 1
Accessories Kit bag x 1
Quick Installation Guide x 1

Please make sure that the contents listed above are not damaged or missing. If you should find damages or missing contents, please contact your supplier immediately.

V1.0 (Apr. 2017)

1

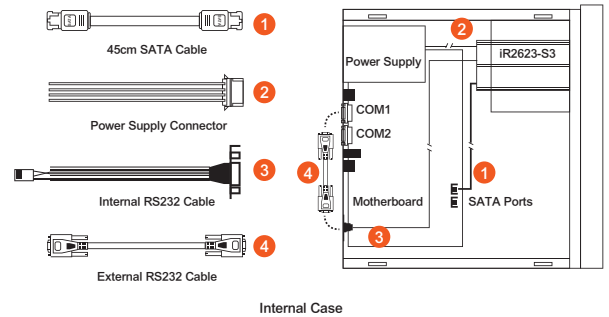
Hardware Requirements and Precautions

- Computers or servers with SATA I & SATA II & SATA III.
- Hard drive with SATA I & SATA II & SATA III.
- You are strongly advised to set the storage mode (the default is the Independent mode) before using the iR2623-S3.
- The product allows the user to simultaneously utilize two hard drives manufactured by different companies. However, if the user expects better efficiency, we strongly recommend the users to use hard drives manufactured by the same manufacturer.
- Please make sure that the two hard drives are free from bad blocks or defects prior to installation in order to avoid system crashes or data loss.
- The actual storage capacity of iR2623-S3 recognized by the system may differ from the total capacity stated on the hard drives combined once the drives have been formatted.
- It is highly recommended for users to back up important data contained within the iR2623-S3 on a regular basis or whenever the user feels necessary to a remote or a separate storage device. Stardom will not be responsible for any lost of data caused during the use of the unit or the recovery of the data lost.

Hardware Installation Procedure

Please follow the instructions below to complete the hardware installation.

- Open the package and take out the product making sure that all the enclosed contents are not damaged or missing. Should you find damages or missing contents, please contact your supplier immediately.
- Place the system on a stable surface. Ensure that it is well ventilated without blockage to the vent and kept away from areas near water and damage prone areas.
- Use the key included in the accessory kit and inserted into the key access opening to eject the removable drive tray latch and extract the removable drive tray.
- Mount your hard drives onto the removable drive tray and secure it with the screws included in the accessory kit to avoid any damage to the hard drive due to accidental movements.
- When the hard drive installation has been completed, insert the hard drive tray into the system horizontally and secure the latch into place.
- Use the preferred cable included to connect your computer to the relative interface connection on the iR2623-S3 unit.



Internal Case

2

Setting the Hard Drive Array Mode

Please select the RAID mode with the jumper located at the back panel. The original default is RAID 1, still there are three pins at the back panel for RAID mode selection: RAID 0 mode by setting the jumper on the bottom of the two pins. RAID 1 mode by setting the jumper on the top of the two pins.

1. RAID 1 Mode

- Place two new hard drives into iR2623-S3 and strongly suggest you to use two identical hard drives to get the equal capacity. If the capacity is different, iR2623-S3 is downward to the small hard drive capacity.
- Under RAID 1 mode, two hard drives has the identical information as one to mirror to the other one, therefore each of the hard drive failed is still able to function normally. When you replace the failed hard disk to the new one the system automatically rebuilding the data to the newly place hard disk.

2. RAID 0 Mode

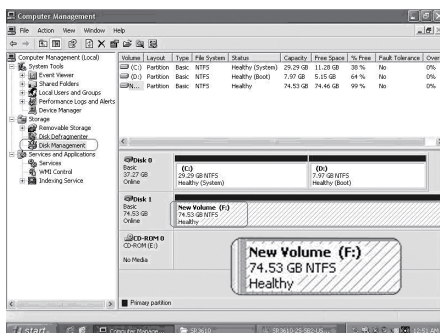
- Place two new hard drives into iR2623-S3 and strongly suggest you to use two identical hard drives to get the equal capacity. If the capacity is different, iR2623-S3 is downward to the small hard drive capacity.
- Under RAID 0 mode, capacity is add up to a one big volume, also with the feature of faster read/write performance efficient.

Computer Set Up

When the hardware setup for iR2623-S3 is complete, you are now ready to turn the machine on.

After the hardware installation is complete, the iR2623-S3 will be treated as one single hard drive. Set the hard drive to AUTO in the computer's BIOS. When the computer is turned on, the system will retrieve the following information:

- In iR2623-S3, the installed hard drive can be detected by the Device Manager of Computer Management for Windows.
- Customers can choose to format the hard drive by using the Disk Management tool of the operating system before using the iR2623-S3.



At this point, the installation process is completely finished. The user can freely retrieve and save data to iR2623-S3 just like retrieving and saving data to a regular hard drive.

3

LCD Display and LED Indicators

1. Booting and Normal status.

iR2623
RAID-1 vxxxxxx.x

Pri HDD : OK
Sec HDD : OK

Status	Alarm LED	Primary HDD status LED		Secondary HDD status LED		Buzzer
		HDD1	HDD2	HDD1	HDD2	
Power On	---	Orange / light on	Blue and Purple / blinking	---	---	---
Standby	---	Orange / light on	Blue / light on	---	---	---
HDD Failure	Red / light on	---	---	Red / light on	---	On
Access	---	Orange / light on	Blue and Purple / blinking	---	---	---
Rebuilding(Source)	---	Orange / light on	Blue / light on	---	---	---
Rebuilding(Target)	---	---	---	Red / blinking on	---	---
Fan Failure	Red / light on	Orange / light on	Blue / light on	---	---	On
Over Heat	Red / light on	Orange / light on	Blue / light on	---	---	On

Thank you for choosing product from RAIDON Technology Inc. This information in the manual has been thoroughly checked before publication, but may not conform to the product actually delivered which mean actual product specifications depend on the product shipped to you. Any update in the specifications or product-related information shall not be subject to further notice but for the latest information on the product, please visit the website as www.RAIDON.com.tw or contact us at supporting@raidon.com.tw, and we will get back to you as soon as possible.

Copyright © RAIDON TECHNOLOGY, INC. All rights reserved.

4